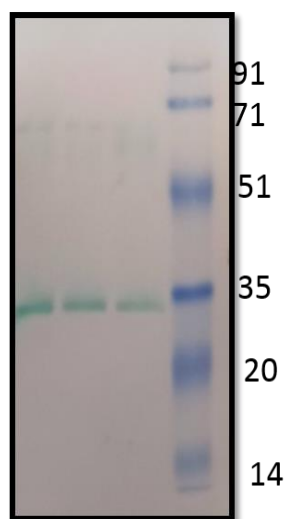


## Cry1F Monoclonal Antibody

### Product Details

<b>Catalog no.</b>	MABA12
<b>Quantity</b>	100µg
<b>Size</b>	150kDa
<b>Host</b>	Mouse
<b>Clone</b>	A10
<b>Clonality</b>	Monoclonal
<b>Subtype</b>	IgG1
<b>Immunogen</b>	Recombinant Cry1F protein
<b>Conjugate/ Tag</b>	Unconjugated
<b>Purification</b>	Purified by Protein A affinity chromatography
<b>Buffer</b>	Phosphate buffered saline (pH 7.4)
<b>Form</b>	Lyophilized/ Liquid
<b>Resuspend</b>	Resuspend in MilliQ water
<b>Application</b>	ELISA, WB
<b>Usage recommendations</b>	ELISA- 1µg/ml, WB-1µg/ml
<b>Storage</b>	Maintain refrigerated at 2-8°C for up to 2 weeks. For long term storage store at -20°C in small aliquots to prevent freeze-thaw cycles.

### WB image of Cry1F Monoclonal Antibody (MABA12)



Legend:  
 1 : 0.25 µg  
 2 : 0.125 µg  
 3 : 0.0625 µg  
 4 : Protein Ladder