



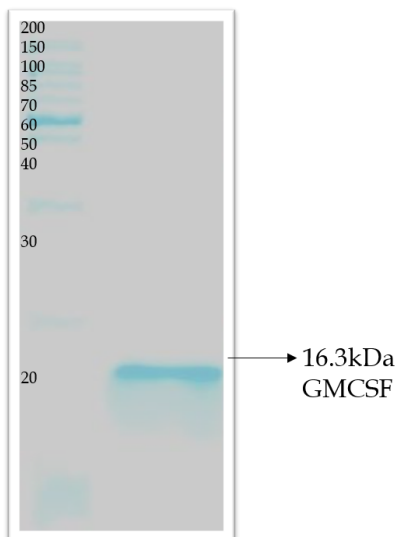
## Recombinant Swine GM-CSF Protein

Granulocyte-macrophage colony-stimulating factor (GM-CSF) also colony-stimulating factor 2 (CSF2), is a monomeric glycoprotein secreted by macrophages, T-cells, master cells, NK cells, endothelial cells and fibroblasts that functions as a cytokine (1,2). The recombinant GM-CSF is expressed in E.coli. Mature porcine GMCSF shares 61%72% amino acid sequence identity with canine, feline, human, and rat GMCSF and 53% with mouse.

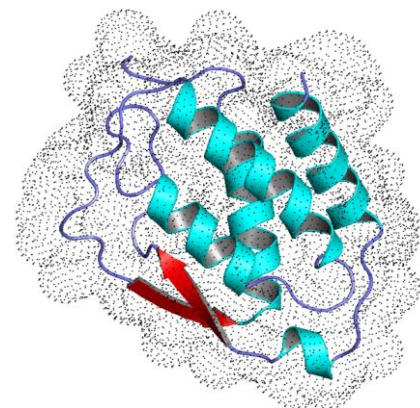
### Product Details

<b>Catalog no.</b>	rPorcine GCSF
<b>Molecular weight</b>	16.3kDa
<b>Uniprot ID</b>	Q29118
<b>Amino acid sequence</b>	V12-W139
<b>Host</b>	E.coli
<b>Formulation</b>	Tris + 10% Glycerol
<b>Conjugate/ Tag</b>	C-terminus 6 × His tag
<b>Purity</b>	> 90% Purity, purified by Ni NTA and determined by SDS-PAGE
<b>Form</b>	Liquid/ Lyophilized
<b>Storage</b>	Store at -20°C and avoid freeze thaw. Stable for 12 months from the date of receipt if kept at recommended temperature
<b>Application</b>	Porcine related research
<b>Suggested working dilution</b>	The optimal concentration should be determined for each specific application

### SDS PAGE Gel image of GM-CSF protein



### Protein Crystal Image



#### **Protein Crystal Image**

*Granulocyte-macrophage colony-stimulating factor (GM-CSF)*