

## Recombinant MTB PepQ Protein

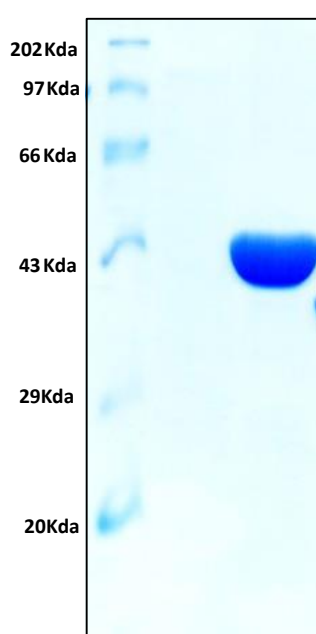
### Background

MTB pepQ is a probable cytoplasmic peptidase which is conserved across *M. tuberculosis*, *M. leprae*, *M. bovis* and *M. avium paratuberculosis*. It was Identified by mass spectrometry in Triton X114 extracts of *M. tuberculosis* H37Rv and is predicted to be essential for in vivo survival and pathogenicity in Mycobacterium, making it a candidate target for TB therapies.

### Product Details

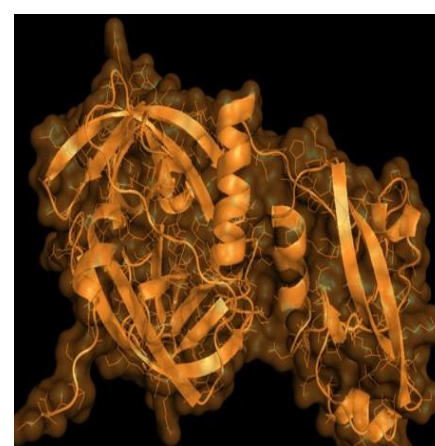
<b>Product Code</b>	#RMTB002
<b>Molecular weight</b>	<b>38.76 kDa</b>
<b>Sequence</b>	MHSQRRDKLKAQIAASGLDAMLISDLINVRYLSGFSGSNGALLVFADERDAVLATDG RYRTQAASQAPDLEVAIERAVGRYLAGRAGEAGVGKLG FESHVVTVDGLDALAGAL EGKNTLVRASGTVESLREVKDAGELALLRLACEAADAALDVLVARGGLRPGRTERQ VSRELEALMLDHGADAVSFETIVAAGANSAIPHHRPTDAVLQVGFVKIDFGALVA GYHSDMTRTFVLGKAADWQLEIYQLVAEAQQAGRQALLPGAELRGVDAARQLI ADAGYGEHFGHGLGHGVGLQIHEAPGIGVTSAGTLLAGSVVTVEPGVYLPGRGGV RIEDTLVVAGGTP KMPETAGQTPELLTRFPKELAIL
<b>Host</b>	E.coli
<b>Purity/ Purification</b>	> <b>95% Purity</b> , purified by Ni NTA and determined by SDS-PAGE.
<b>Form</b>	Lyophilized powder. Dilute to 1 mg/mL in PBS
<b>Purification Tag</b>	C- terminus 6 X His tag
<b>Applications</b>	Tuberculosis research
<b>Preparation and Storage</b>	Store at -20 degree C, for extended storage
<b>ISO Certification</b>	Manufactured in an ISO 9001:20015 Certified Laboratory.

### SDS-PAGE MTB PepQ



SDS-PAGE gel showing a single PepQ band at 38 kDa after purification.

### Protein Crystal Image



**Ordering Information:**  
GeNext Genomics Pvt. Ltd.  
103, Abhyankar Nagar,  
Nagpur  
Ph.No.08888803973, 08380084087