

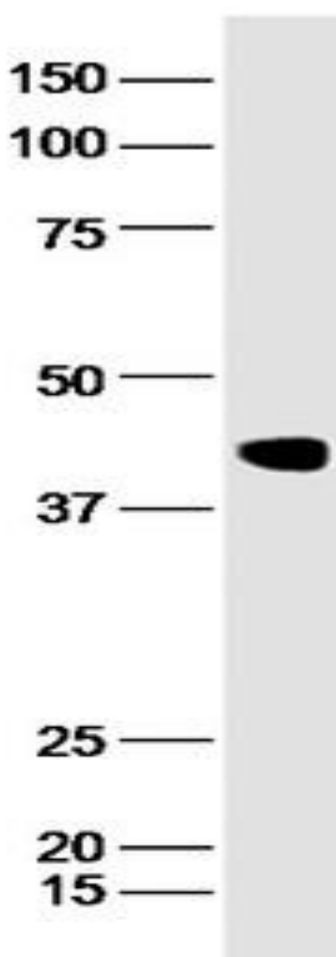
E2-CSFV Monoclonal Antibody

Background

The CSFV envelope glycoprotein E2 is the major immunogenic protein eliciting protective immunity against CSFV infection in swine. E2 Antibody is a mouse monoclonal antibody recognizes virus antigen.

Product Details

Catalog number	MAB4D11
Size	150kda
Host	Mouse
Clone	4D11
Clonality	Monoclonal
Isotype	IgG2a
Immunogen	Recombinant CSFV E2 Protein
Conjugate / Tag	Unconjugated
Purity	Protein A purified
Concentration	0.12mg/ml
Form	Liquid
Buffer	PBS
Antibody product type	Primary Antibody
Applications	ELISA (1µg/ml), WB



Storage:

Maintain refrigerated at 2-8°C for up to 2 weeks. For long term storage store at -20°C in small aliquots to prevent freeze-thaw cycles.