

## Recombinant CSFV E2 Protein

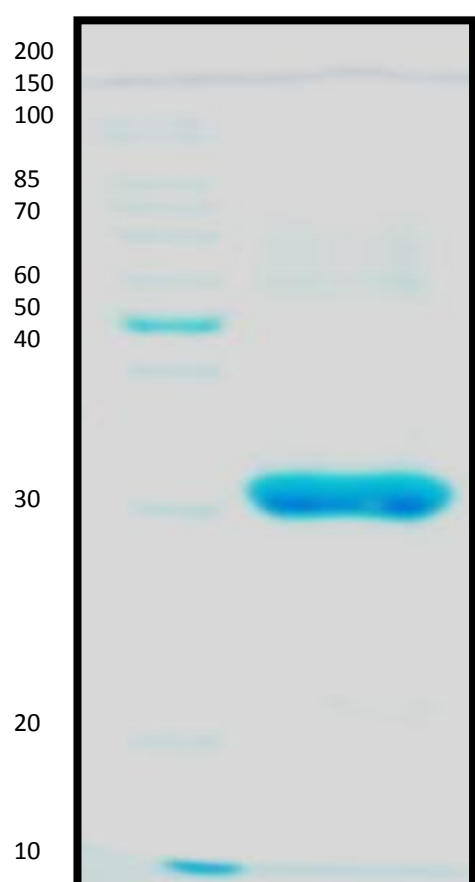
### Background

Classical swine fever (CSF) or hog cholera virus (HCV) is a highly contagious disease of pigs and wild boars. The E2 glycoprotein is the most immunogenic CSFV protein responsible for the disease.

### Product Details

<b>Product Code</b>	rCSFVE2-2
<b>Molecular weight</b>	27 KDa
<b>Sequence</b>	MGDDFGFGLCPFNTSPVVKGYNTLLNGSAFYLVCPIGWTGVIECTAVSPTTLRTEVVKTFRREK PFPHRMDCLTTTVENEDLFYCKLGGNWTCVKGEPVVYTGGQVKQCRWCGFDFNEPDGLPHYPI GKCILANETGYRIVDSTDCNRDGVVISTEGSHECLIGNTTVKVHASDGR LGPMPCRPKEIVSSAGPV RKTSCTFKYAKTLKNKYEP RDSYFQQYMLKGEYQYWF DLDVTDRHSD
<b>Host</b>	E.Coli
<b>Purity/ Purification</b>	> <b>95% Purity</b> , purified by Ni NTA and determined by SDS-PAGE.
<b>Form</b>	Lyophilized powder. Dilute to 1 mg/mL in PBS
<b>Purification Tag</b>	C- terminus 6 X His tag
<b>Applications</b>	Classical swine fever research
<b>Preparation and Storage</b>	Store at -20 degree C, for extended storage
<b>ISO Certification</b>	Manufactured in an ISO 9001:20015 Certified Laboratory.

### SDS-PAGE CSFV E2 27 kDa Glycoprotein



CSFV E2 protein was expressed in E. Coli as his-tag fusion protein.